

Supplementary Materials

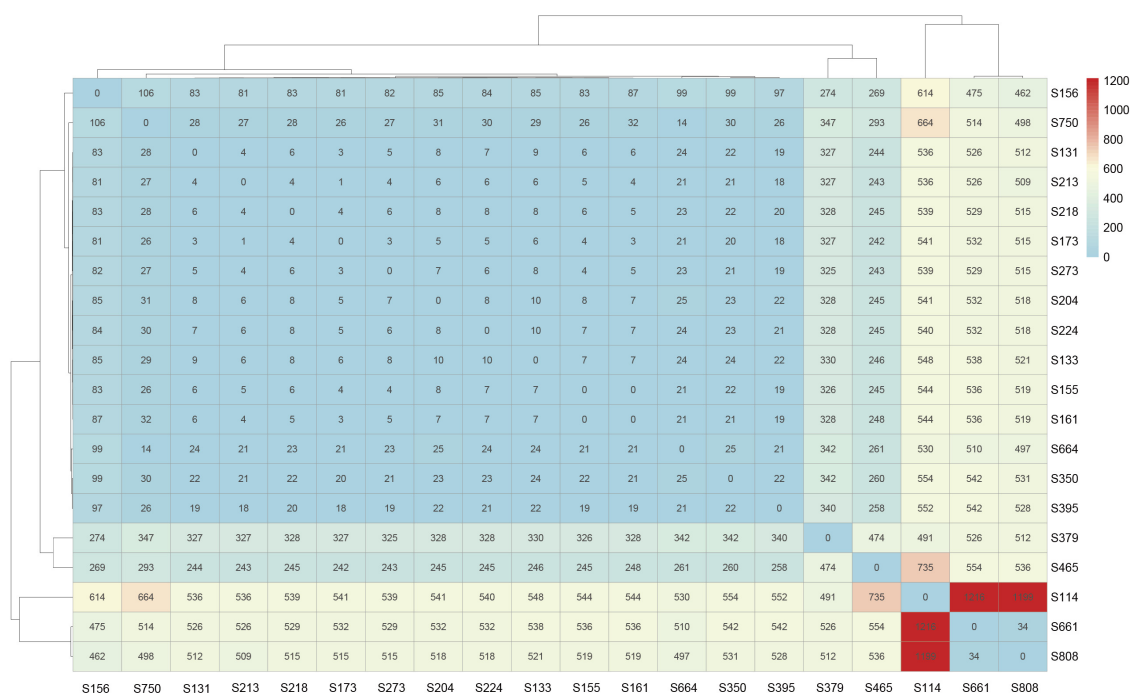
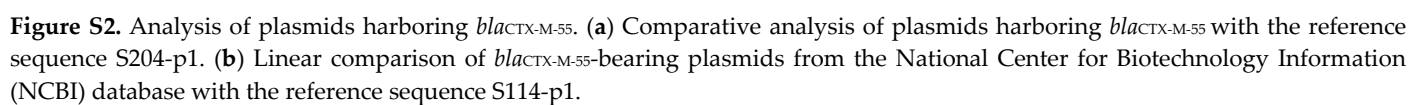


Figure S1. Visualization of the number of single nucleotide polymorphism (SNP) variant sites among 20 CRO-RSE.



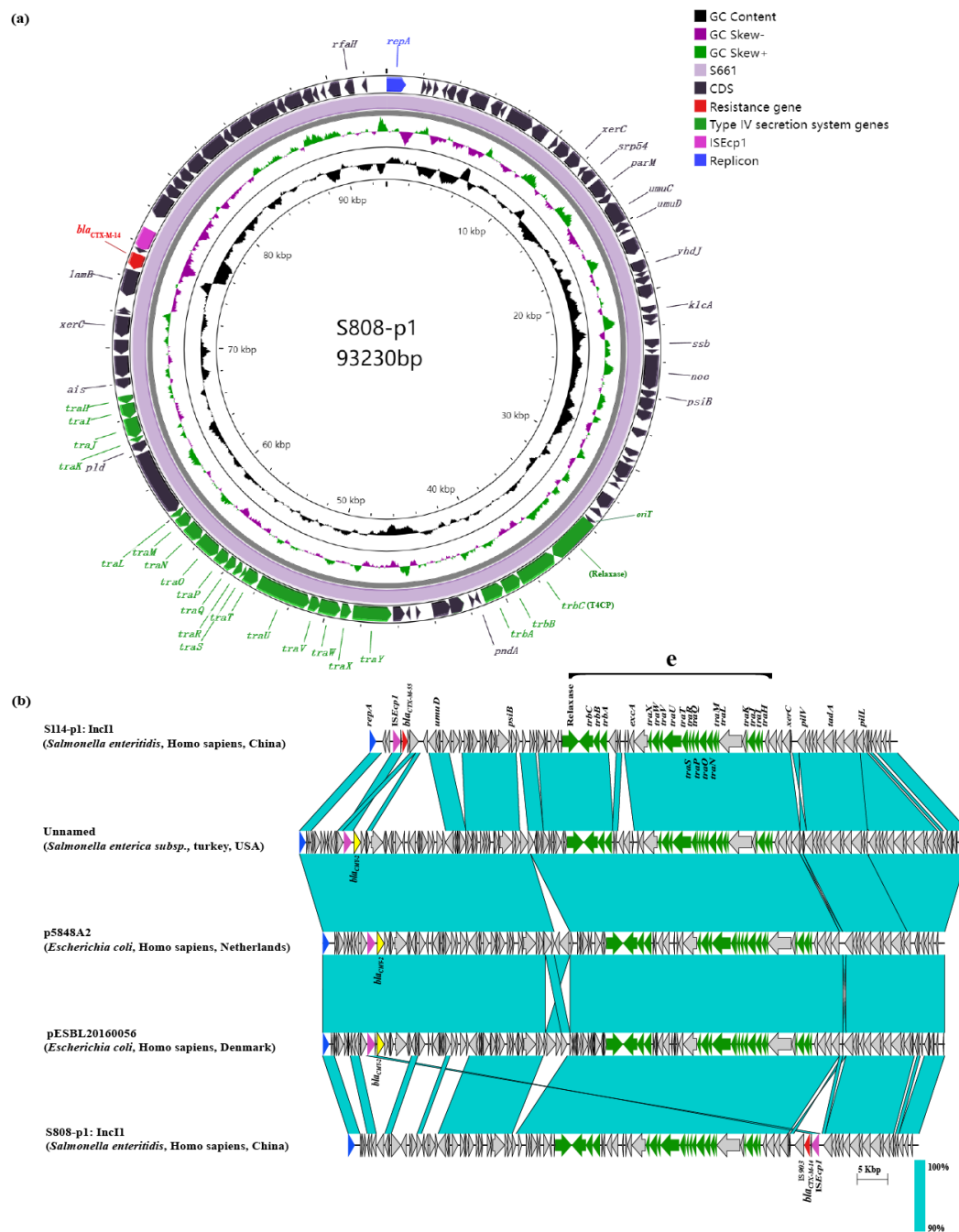


Figure S3. Analysis of plasmids harboring *bla*_{CTX-M-14}. **(a)** Comparative analysis of the short read sequencing data from S661 with the reference sequence S808-p1. **(b)** Linear comparison of plasmids structurally similar to S808-p1.