

Tributyrin supplementation alleviates chronic-binge ethanol induced oxidative stress in the gut-lung axis

Supplementary Materials

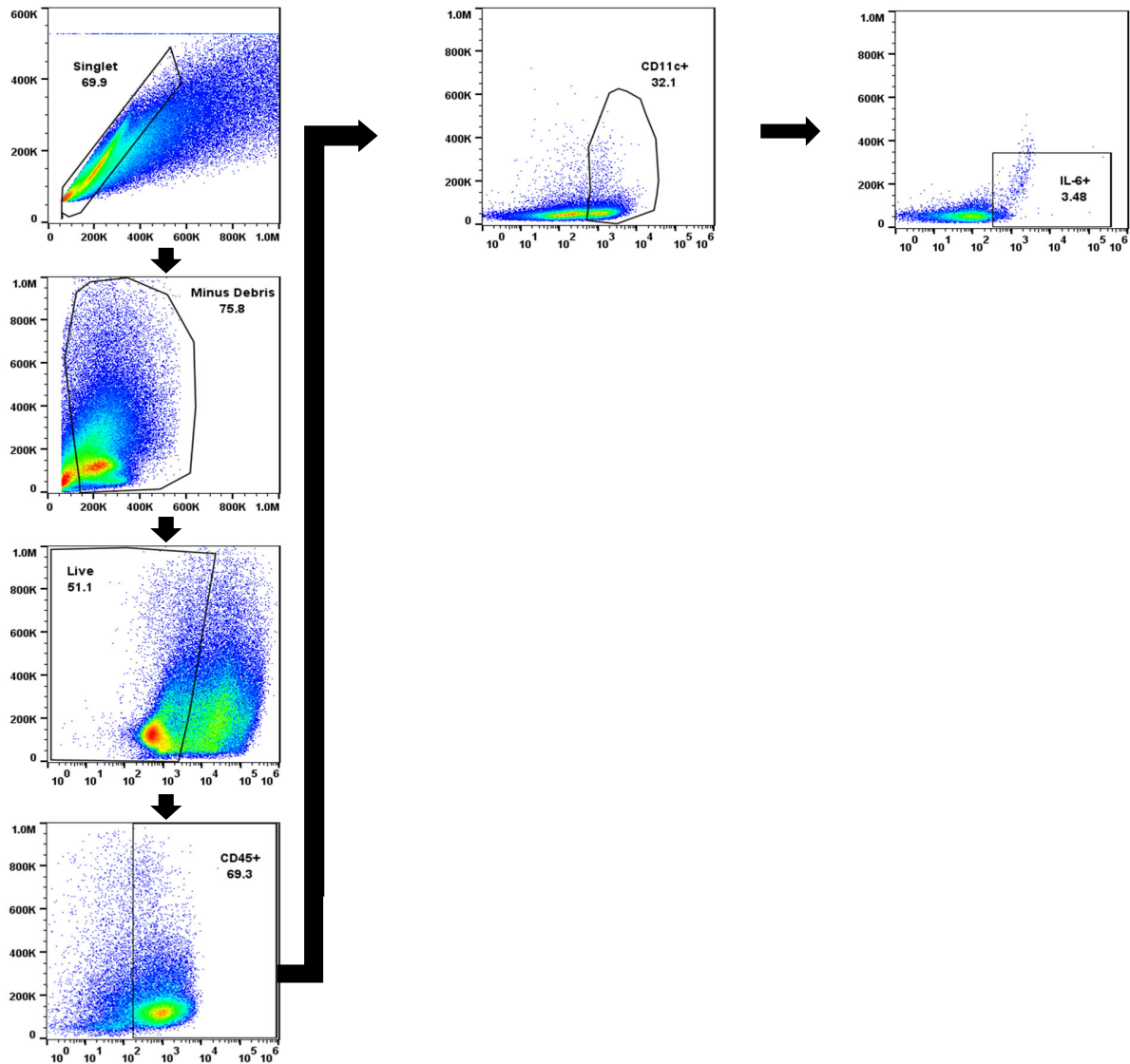


Figure S1. Flow gating strategy for the identification of CD11c⁺IL-6⁺ cells in intraepithelial lymphocytes.

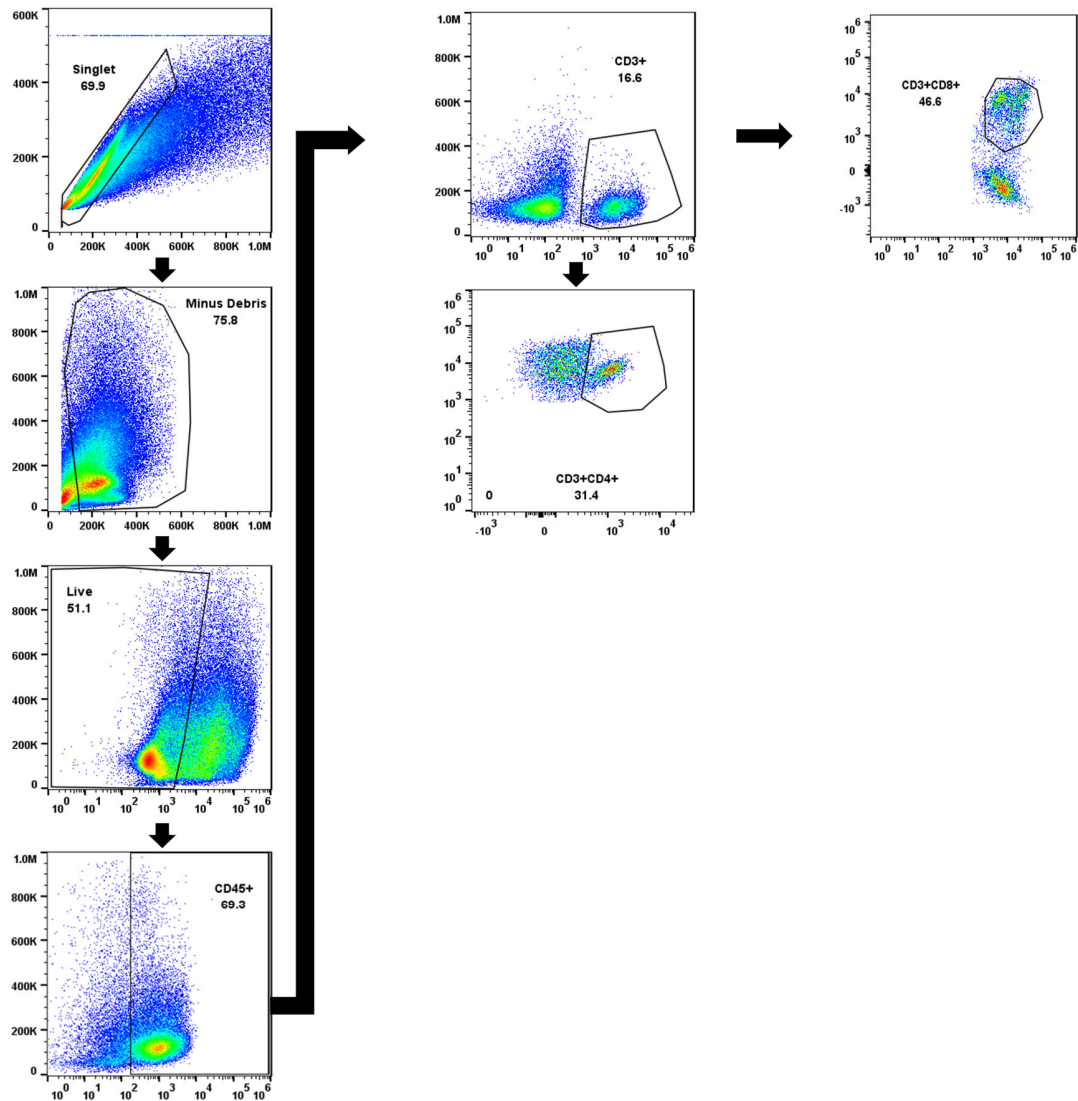


Figure S2. Flow gating strategy for the identification of CD3⁺CD4⁺ and CD3⁺CD8a⁺ cells in lamina propria lymphocytes.

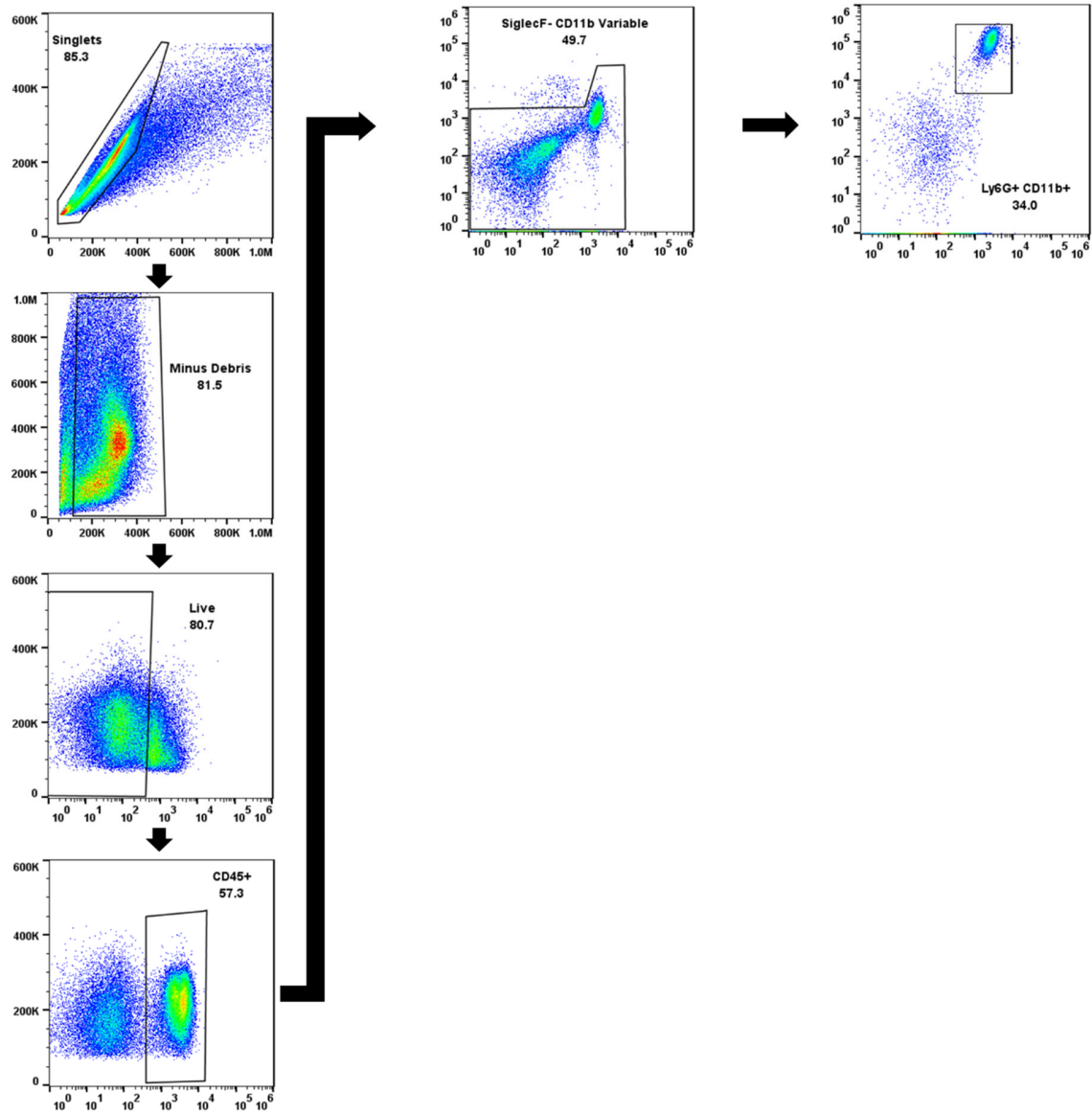


Figure S3. Flow gating strategy for the identification of Ly6G⁺CD11b⁺ cells from lung cells.