

Table S1. Unique CDS of '*Ca. P. asteris*' strains M8 and M33.

Locus tag	Product
M8	
QN326_00710	hypothetical protein
QN326_01000	hypothetical protein
QN326_01250	putative secreted protein
QN326_02490	hypothetical protein
QN326_02740	hypothetical protein
QN326_03060	hypothetical protein
QN326_03110	hypothetical protein
QN326_03170	hypothetical protein
QN326_03370	hypothetical protein
QN326_03390	hypothetical protein
QN326_03550	hypothetical protein
QN326_04070	hypothetical protein
QN326_04150	hypothetical protein
QN326_04390	hypothetical protein
QN326_04480	hypothetical protein
QN326_04570	hypothetical protein
QN326_04590	hypothetical protein
QN326_04690	hypothetical protein
QN326_04910	putative secreted protein
QN326_04990	hypothetical protein
QN326_05220	hypothetical protein
QN326_05250	hypothetical protein
QN326_05410	hypothetical protein
QN326_05790	hypothetical protein
QN326_05890	hypothetical protein
QN326_06420	putative secreted protein
QN326_06560	putative secreted protein
QN326_06680	hypothetical protein
QN326_06710	hypothetical protein
QN326_06750	hypothetical protein
QN326_07180	hypothetical protein
QN326_07200	putative secreted protein
QN326_07280	hypothetical protein
QN326_07300	hypothetical protein
QN326_07370	hypothetical protein
QN326_07400	hypothetical protein
QN326_07450	hypothetical protein
QN326_07490	hypothetical protein
QN326_07710	hypothetical protein
QN326_08240	DEAD/DEAH box helicase
QN326_08580	hypothetical protein
M33	
M33023_00300	hypothetical protein
M33023_00330	hypothetical protein
M33023_00340	hypothetical protein
M33023_00350	hypothetical protein
M33023_00360	hypothetical protein
M33023_00420	hypothetical protein
M33023_00520	hypothetical protein
M33023_00910	hypothetical protein
M33023_01030	hypothetical protein
M33023_01150	hypothetical protein
M33023_01230	hypothetical protein
M33023_01390	hypothetical protein
M33023_01410	single-strand DNA-binding protein
M33023_01430	putative secreted protein
M33023_01470	putative secreted protein
M33023_01680	hypothetical protein
M33023_01690	hypothetical protein
M33023_02070	hypothetical protein
M33023_02300	hypothetical protein

M33023_02330	hypothetical protein
M33023_02350	hypothetical protein
M33023_02360	hypothetical protein
M33023_02370	hypothetical protein
M33023_02450	hypothetical protein
M33023_02470	hypothetical protein
M33023_02810	hypothetical protein
M33023_02840	hypothetical protein
M33023_03330	hypothetical protein
M33023_03520	hypothetical protein
M33023_03840	hypothetical protein
M33023_03890	putative secreted protein
M33023_04010	hypothetical protein
M33023_04050	putative secreted protein
M33023_04100	putative secreted protein
M33023_04840	hypothetical protein
M33023_04960	hypothetical protein
M33023_04980	hypothetical protein
M33023_05660	hypothetical protein
M33023_05800	hypothetical protein
M33023_05810	hypothetical protein
M33023_06010	hypothetical protein
M33023_06270	hypothetical protein
M33023_06460	hypothetical protein
M33023_06520	single stranded DNA binding protein
M33023_06600	hypothetical protein
M33023_06770	putative secreted protein
M33023_06780	hypothetical protein

*Unique proteins represent the CDS that were not assigned by Orthofinder.

Table S2. Coding of experimentally validated effector proteins within the asteris group.

Strain	M33	AYWB	M8	OY-M	M3	DeVilla	RP166	Zhengzhou	MDGZ-01	QS2022
Locus tag	M33023_	AYWB_RS	QN326_	PAM_	MBSPM3_v1c	EXT02_	RP166_	HGD80_RS	LJP71_RS	QS2022_
Tengu	02140	00785	06170	765	2160	01135	6200	01210	02000	4580
SAP05	00370	00160	00280	518			0280	03510		
SAP11		01770	00690	519	1080		0710			
SAP54		01055	00730	049			0750			0730



Figure S1. Phylogenetic tree of the '*Ca. P. asteris*' strains constructed using the neighbour-joining method, using 16S rDNA sequences of the employing '*Ca. P. rubi*' strain RS as the outgroup. Numbers on the branches are bootstrap values obtained for 1000 replicates (only values above 70 % are shown).

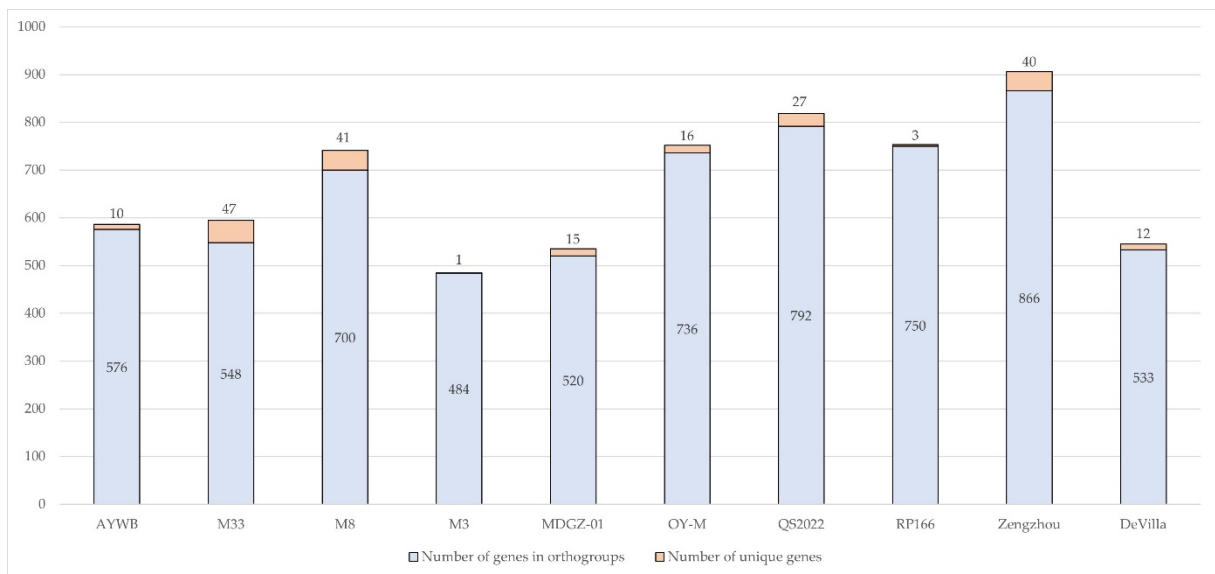


Figure S2. Number of shared and unique CDS within the asteris group.