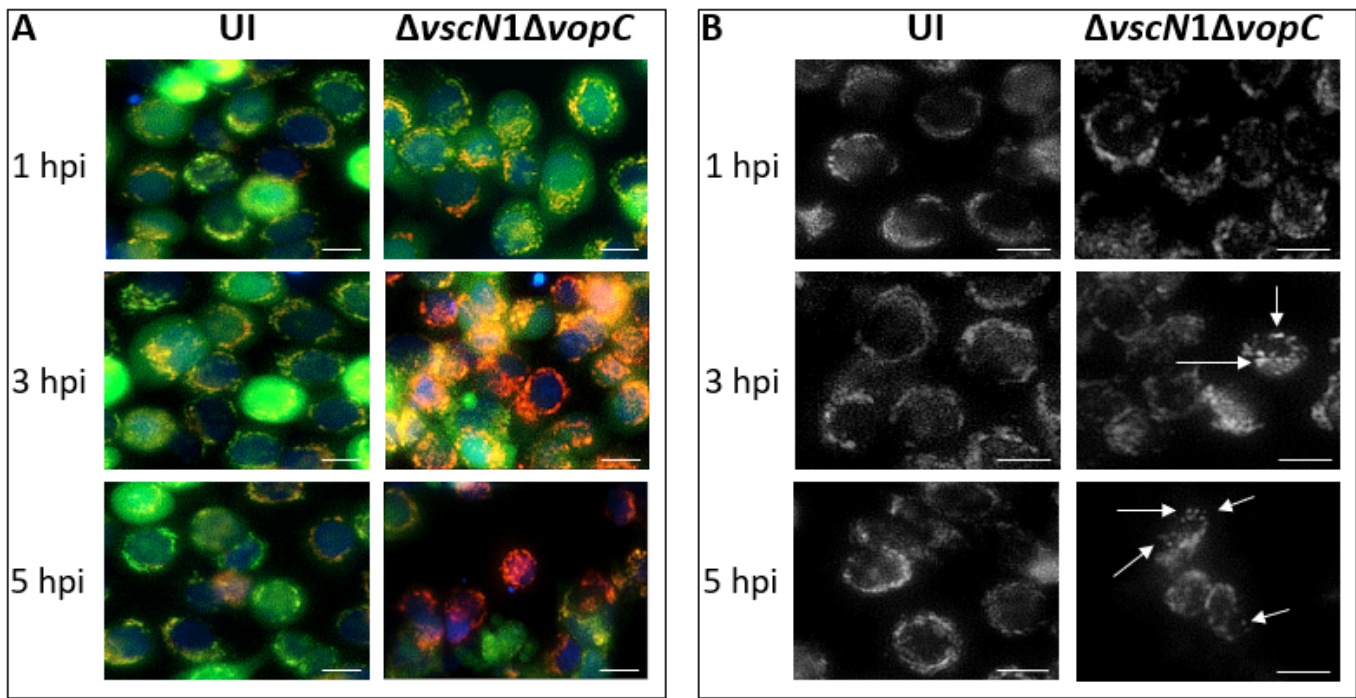


Supplementary Figure S1.



Supplementary Figure S1. *V. parahaemolyticus* *vopC* mutant strain induce mPTP opening and mitochondrial fragmentation in intestinal cells T3SS2-dependent. **(A)** Uninfected HT-29 cells (UI) and infected with *V. parahaemolyticus* $\Delta vscn1 \Delta vopC$ strain ($\Delta vopC$, T3SS2+) at 1, 3 and 5 hpi. In the figures, green color indicates the mPTP are closed (healthy mitochondria), red color shows the mitochondrial mass (stress condition), and blue color represents the Hoechst-stained nuclei. **(B)** Mitochondria network morphology at 1, 3 and 5 hpi was analyzed by microscopy. White arrows show cells with mitochondrial fragmentation. Representative images from 3 independent trials are shown. Scale bar: 10 μm .