

Supplementary

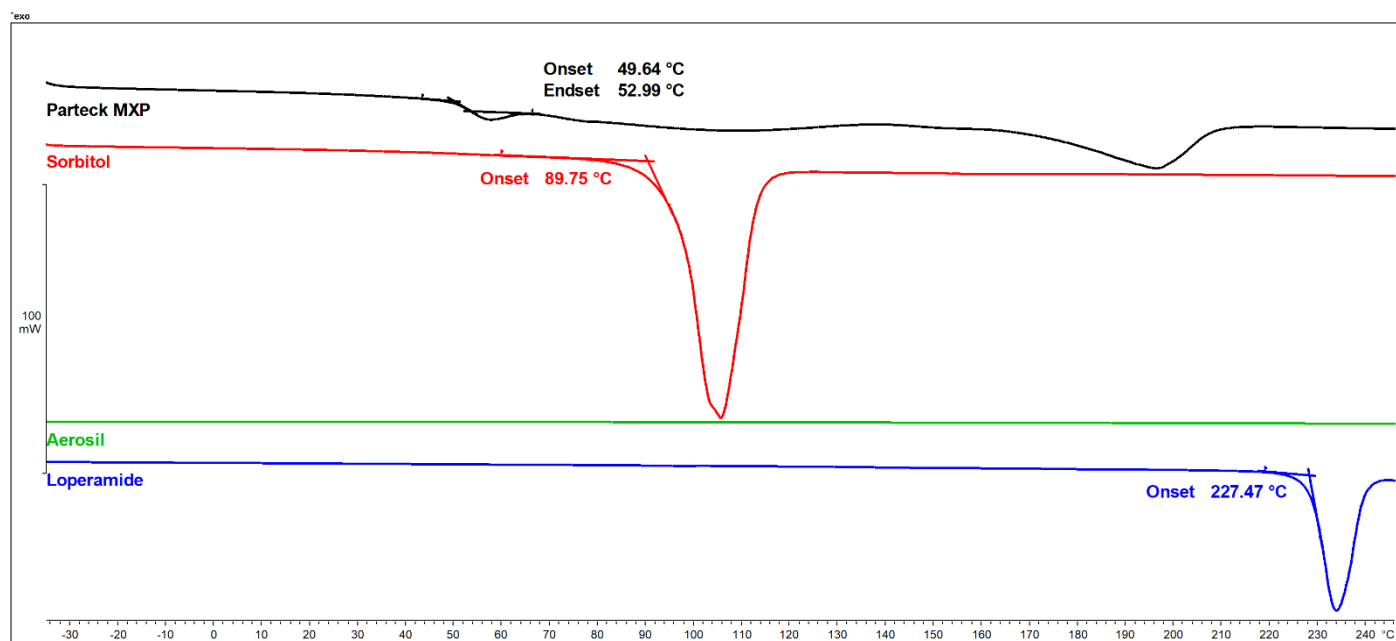


Figure S1. First heating: neat substances

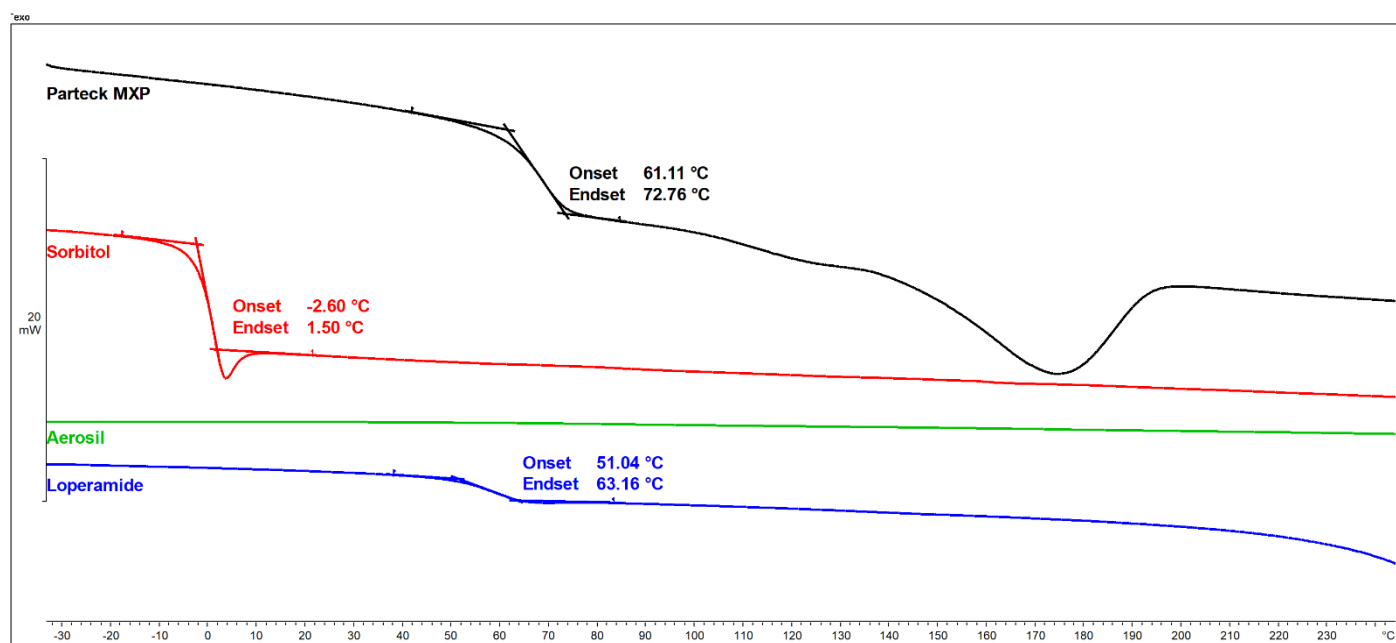


Figure S2. Second heating: neat substances

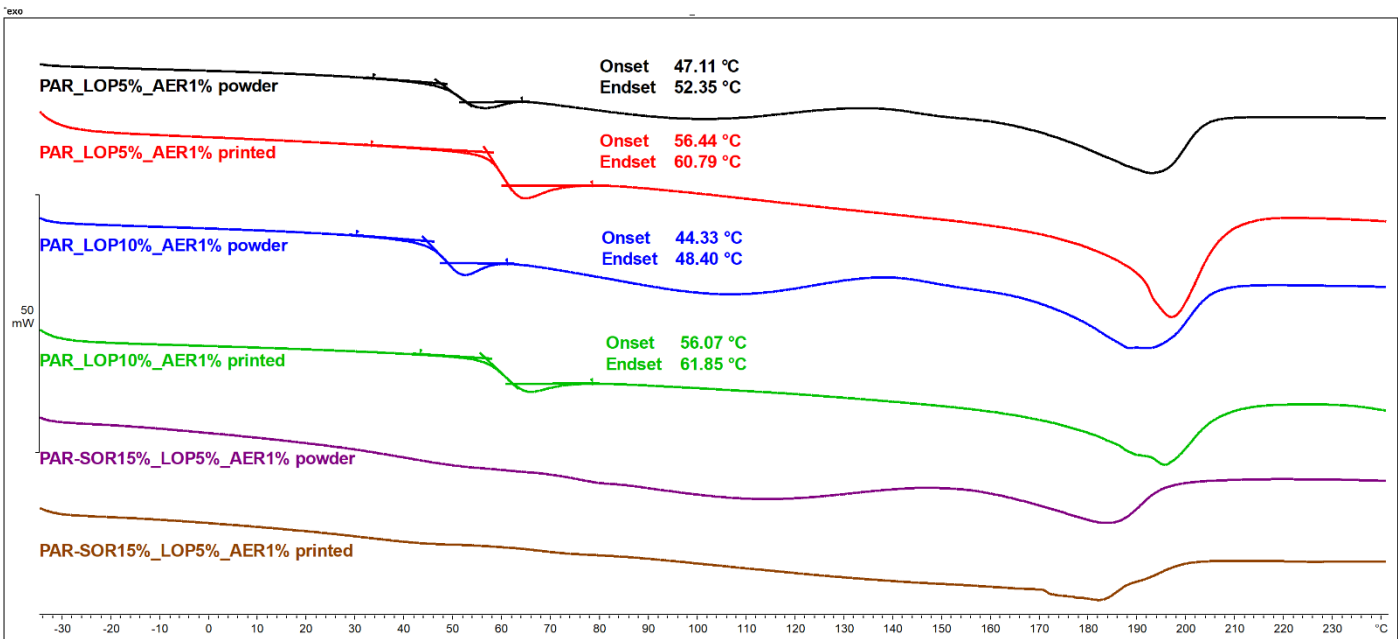


Figure S3. First heating: powdered and printed samples

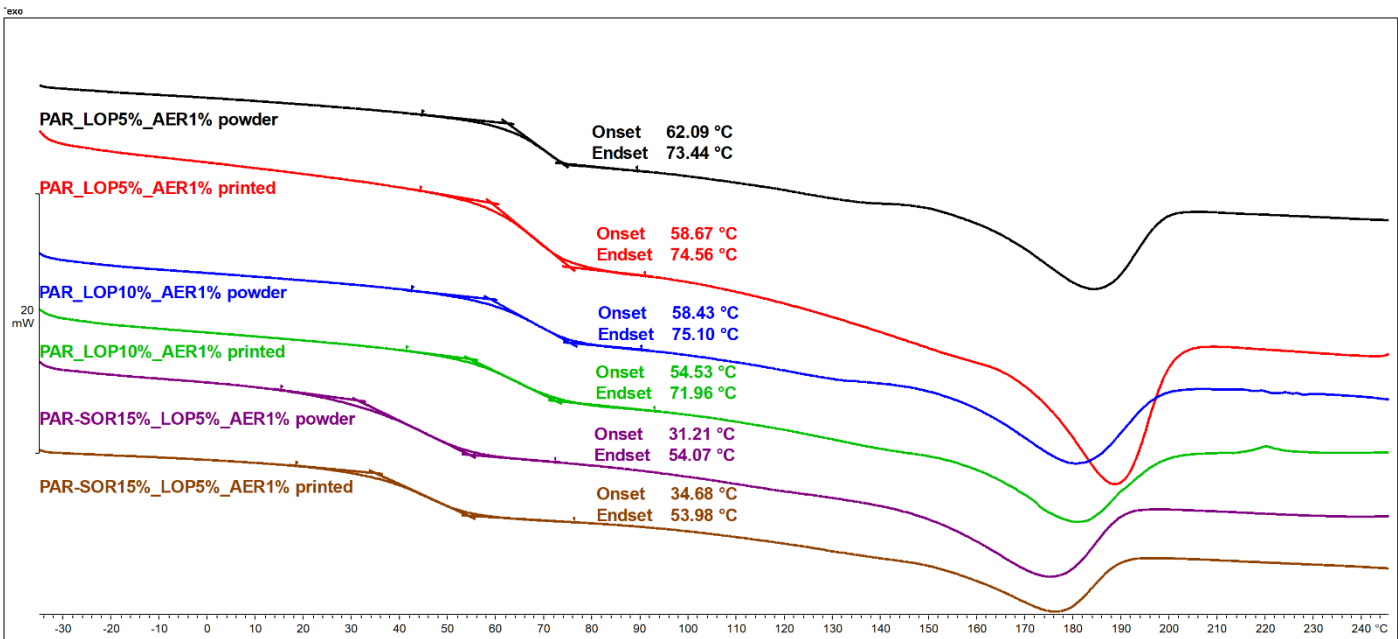


Figure S4. Second heating: powdered and printed samples

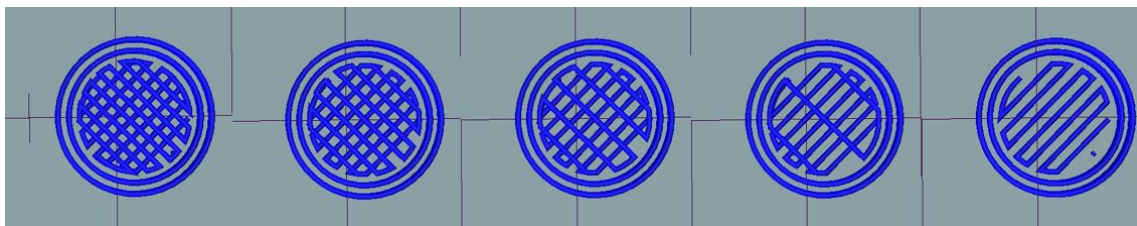


Figure S5. Sliced tablets for visualization of infill

The picture of the sliced tablets shows the layers 2-4 for each individual infill (100% - 0% filtr.) As shown above, the solid layer is constant for each infill and no additional infill is placed for 0% tablets. The addition of 3 top solid layers closes the hollow tablet sufficiently.

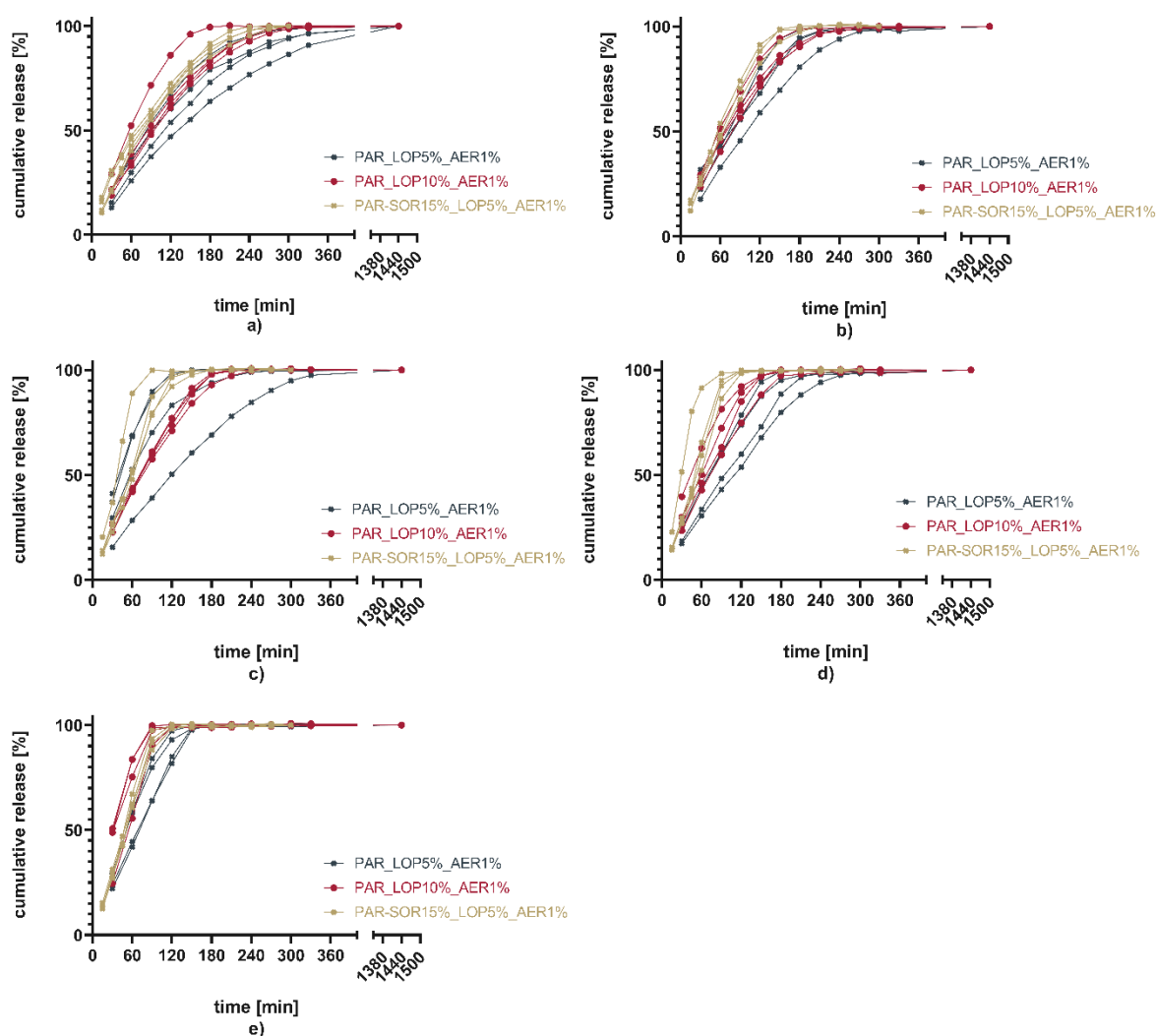


Figure S6. Dissolution data of individual tablets (100%: a), 75%: b), 50%: c), 25%: d), 0%: e))