

Supplementary Materials for

Development of an NO₂ Gas Sensor Based on Laser-Induced Graphene Operating at Room Temperature

Gizem Soydan ¹, Ali Fuat Ergenc ², Ahmet T. Alpas ³ and Nuri Solak ^{1,*}

¹ Department of Metallurgical and Materials Engineering, Istanbul Technical University, Istanbul 34469, Turkey; soydan@itu.edu.tr

² Department of Control and Automation Engineering, Istanbul Technical University, Istanbul 34469, Turkey; ergenca@itu.edu.tr

³ Department of Mechanical, Automotive and Materials Engineering, University of Windsor, Windsor, ON N9B 3P4, Canada; aalpas@uwindsor.ca

* Correspondence: solaknu@itu.edu.tr

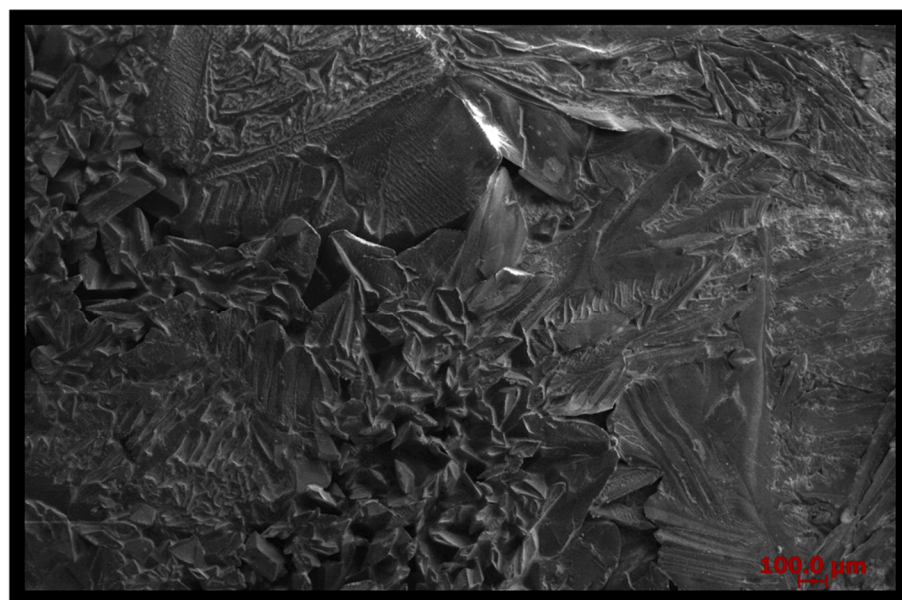


Figure S1. SEM image of SnO₂/LIG structure without citric acid.

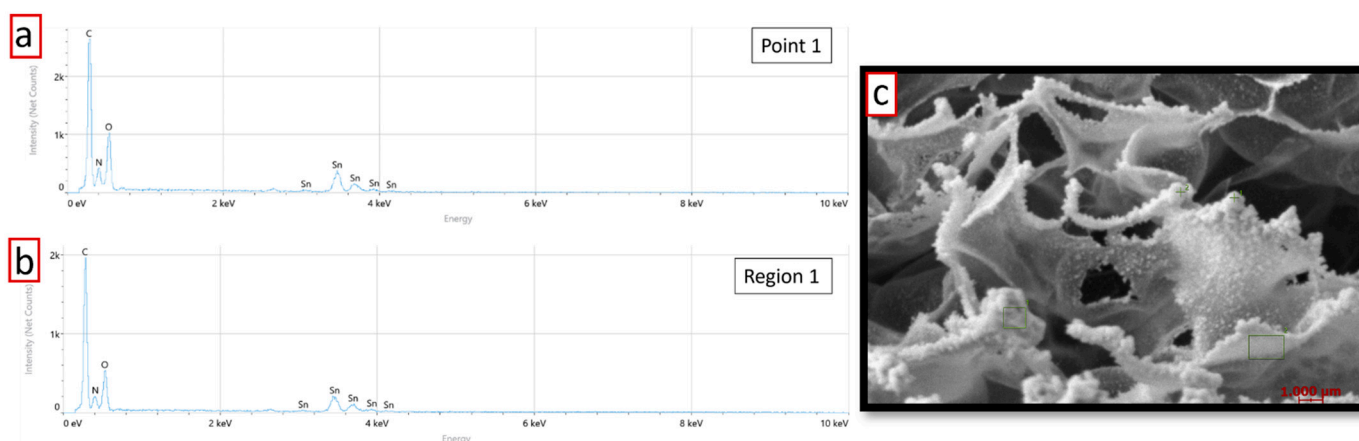


Figure S2. (a,b) EDS spectra and (c) SEM image of LIG SnO₂.

Table S1. EDS results of LIG/SnO_2 .

Element	Point 1		Region 1	
	Atomic %	Weight %	Atomic %	Weight %
C	40.5	18.0	44.5	20.0
N	5.1	2.6	5.6	3.0
O	42.1	25.0	37.7	22.6
Sn	12.3	54.3	12.2	54.4

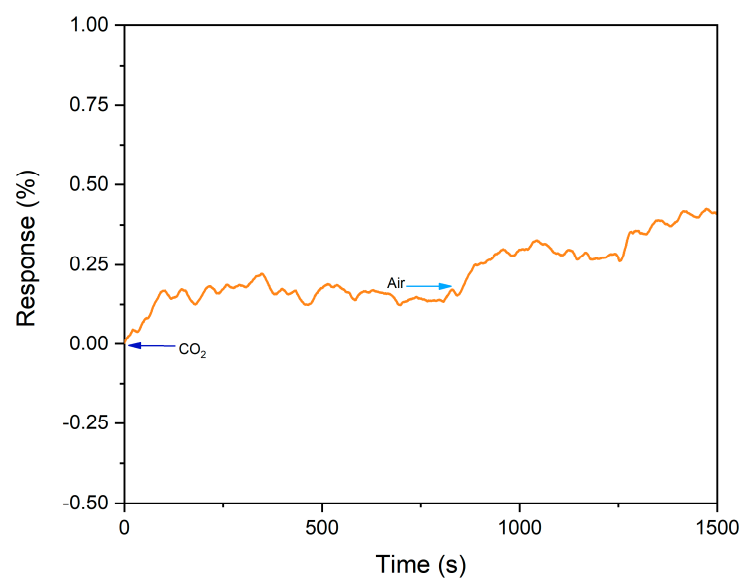


Figure S3. The response-time plot of LIG/SnO_2 sample towards 20,000 ppm CO_2 .